

**CELEBRATING**  
**145**  
**YEARS**  
**AT ERIE HOUSE**

---

1870 - 2015

ANNUAL REPORT 2014





## MISSION

To promote a just and inclusive society by strengthening low-income, primarily Latino families through skill building, access to critical resources, advocacy and collaborative action.

## CORE VALUES

Affirm the dignity and capacity of all persons to reach their fullest potential

Strengthen the voice of the disenfranchised

Embody a spirit of service and respect

Promote social change by forging creative solutions

## Dear Friends:

The close of 2014 at Erie Neighborhood House marked a significant step in our journey: **We entered our 145th year serving Chicago's immigrant community.**

What began as a humble effort on the corner of Erie and Noble to reach out to our neighbors has blossomed over the course of a century and a half into a bold, innovative and engaged presence in Chicago's West Town, Humboldt Park and Little Village communities.

We're proud to say we have empowered close to 300,000 program participants during that time, and, if 2014 is any indicator, we will continue strengthening the lives of thousands upon thousands more in the years to come.

The pages that follow testify to the success of the past year—and the past 145 years, for that matter—as we seek to remain faithful to the foundation our forebears laid: **to promote a just, inclusive society by empowering low-income, immigrant families through education and access to other vital resources.**

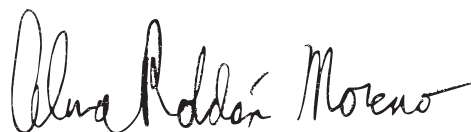
As you can imagine, this mission wouldn't be able to stand the test of time without the steadfast support of our partners. Your strategic vision, tireless volunteerism, and abundant generosity have accompanied us throughout our 145-year journey, and for that we are grateful.

We also recognize the vital role our partners will continue to play—must continue to play—as we embark on our next steps. We're happy we can count on your support as we continue delivering quality programs and services for youth, adults and families; expand our presence in Little Village and beyond; and ensure that the needs of our community are represented both on the local level and in Washington. We've come so far, but there's still more to do.

**Thanks for celebrating 145 amazing years with us, and here's to the next 145!**



**John DeCarrier**  
President  
Board of Directors



**Celena Roldán-Moreno**  
Executive Director



# BUILDING UPWARD

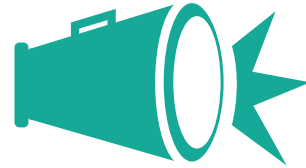
and moving onward



## OUR COMMUNITIES

West Town • Humboldt Park  
Little Village

When we invest in the lives of individuals and families, we're investing in something that is much, much bigger. The return on providing access to education, employment opportunities and other resources is a safer, healthier, more vibrant community. We're proud to say our impact can be observed in each of the 4,500 participants we serve annually in Chicago's West Town, Humboldt Park and Little Village neighborhoods—and beyond.



## ADVOCACY WORK

Leadership Development  
Community Organizing • Strategic Partnerships  
Voter Registration

We seek to empower our participants with a voice themselves, because we know that if we want to see true social transformation, those impacted—children, adults and families—must also have a place at the table, working for change. Voter registration drives, call-in campaigns, partnerships with other organizations, public rallies and demonstrations all serve to enlist members of our community in the day-to-day work of democracy.



# 11 CORE PROGRAMS

*benefiting*

ADULTS, CHILDREN & FAMILIES



## EDUCATION PROGRAMS

Early Childhood Education • After School  
YOU • Health & Leadership • Proyecto Cuidate

At the heart of our mission from day one, education at Erie House ranges from childcare and afterschool programs for kids ages 2-18 to technology, English as a Second Language (ESL) and job skills training for adults. We're also engaged in teaching children and families about healthy living, walking alongside youth as they aspire to graduate from high school and earn a college degree, showing them how to believe in themselves and equipping parents with skills vital to raising their children.



## EMPOWERMENT PROGRAMS

Buen HOGAR • English as a Second Language  
Community Literacy • Technology  
Citizenship & Immigration • Workforce Development

Our participants are resilient, and we tap into this asset by equipping them with the tools necessary to achieve a better life for themselves, their families and their communities. Whether we're providing participants with access to affordable housing, skills to advance their careers or assistance navigating our country's immigration system, our hope is to do whatever we can to enable them to thrive.





**SENATOR  
DICK DURBIN**



**IRIS  
CORRAL**



**REVEREND  
ROBERT REYNOLDS**

# A SHINING SPOTLIGHT

## on members of our community

### **SENATOR DICK DURBIN**

Promoting a more just and inclusive society starts at a grassroots level, but it also requires effective collaboration with civic leaders and lawmakers. Senator Dick Durbin has been one such ally, advancing causes that impact the community we serve—such as early childhood education and immigration reform—for more than three decades.

“Erie House is an amazing operation,” says Durbin. “For over a century, it has done an amazing job providing essential services to newcomers to Chicago—and to America—to help them become acclimated in our country.”

Senator Durbin has long been a familiar face at Erie Neighborhood House, stopping by on occasion to read stories with our preschool children or discuss the importance of securing access to college opportunities for DREAMers. “It’s important for those of us in elected office—particularly working out of Washington—to keep in touch with the real world,” says Durbin, whose mother was a Lithuanian immigrant. “What I’ve found is that keeping in touch with the community, community organizations and the people that work there is a good way to stay grounded and understand the concerns of constituents.”

### **IRIS CORRAL**

Even as a young girl growing up in West Town, Iris Corral found Erie House to be a second home. “(It) is where my foundation started,” she says, explaining that she began tagging along when her father visited the gym at Erie House for boxing. Years later as a high school student, she volunteered to tutor younger Erie House children and participated in the TEAM program. “We did some great things,” she recalls. Among her favorite memories was her first overnight trip away from home—to Camp Algonquin in McHenry County. “When you’re growing up and your resources are extremely low, those things amaze you.”

Corral, who received a scholarship through her participation in TEAM, has long made it a point to pay it forward. After graduating from college, Corral worked in Erie House’s childcare program for more than a decade, first as a teacher’s assistant and eventually as family support coordinator. Now the preschool director for Through A Child’s Eyes in Cicero and on the board of a family mental health organization in that community, she still looks back on her journey with Erie House fondly. “Erie’s my family,” she explains. “I have a strong foundation for giving and caring because that is what I experienced at Erie.”

### **REV. ROBERT REYNOLDS**

The history of Erie House dates back to 1870, when Reverend Emanuel Van Orden opened the doors to Holland Presbyterian Church on the corner of Erie and Noble. The church fast became refuge to its immigrant neighbors, providing families in need with access to food, clothing and education programs.

“The Presbytery is all about social justice and righteousness,” explains Rev. Dr. Robert Reynolds, executive presbyter for the Presbytery of Chicago. “It was true when Erie House started and it is still true today—it’s a core value and has been part of our rich heritage for over 175 years.”

Throughout Erie House’s first century of service, a Presbyterian minister directed the programs operating at 1347 W. Erie St. Although the relationship between Erie House and the Presbytery is less formal today—Erie House has been a secular organization for over a half century—numerous Presbyterian congregations continue to support Erie House financially and volunteer their time and talents throughout the year.

“We encourage our congregations to be in partnership with us and with community organizations in pursuit of the common good,” Reynolds says.



**EMA  
LOPEZ**



**CHARLES "JACK"  
O'KIEFFE**



**RAMÓN  
CEPEDA**

Meet these extraordinary individuals and learn how they have each played a role in our journey to 145 years of service.

**EMA LOPEZ**

Ema Lopez still remembers the day she began working at Erie Neighborhood House in 1978. "There was an opening for clerk typist, and [then-Executive Director] Merri Ex interviewed me," says Lopez, who had grown up participating in various Erie House programs. "That same day she called me and said I got the job." The office environment looked a bit different back then: Lopez's work responsibilities included typing materials onto stencils and recording donor contributions on ledger cards.

Thirty-seven years later, Lopez is still at Erie House and she bears the distinction of having the longest current tenure out of all 150 employees. Being around that long has its perks: When Erie House moved its administrative offices to 1701 W Superior St, she was able to convince the construction team to install special purple tiles in her workspace (purple naturally being her favorite color).

Her roles have varied over the years—she even spent time assisting with a youth drill team and managing a neighborhood thrift store owned and operated by Erie House—but her passion for the work she does hasn't subsided. "I hear friends say that they dread going to work. I've never felt like that here at Erie," she says. "I look forward to coming to work because we're helping the community, and that's what it's all about."

**CHARLES "JACK" O'KIEFFE**

An invitation from former Board member Bob Wiley introduced Charles "Jack" O'Kieffe to Erie Neighborhood House in the 1980s. The two knew each other through their membership at First Presbyterian Church of Wilmette, and Jack was immediately attracted to the tight-knit community he encountered at Erie House. "It was a family," the retired investment executive says, describing how he and his wife, Connie, began commuting into the city on a monthly basis to have supper with other couples connected to the Board of Directors.

That introduction led to a wonderful relationship: Jack invested 32 years on the Board of Directors—including a role as Board President—before retiring last year. "[Erie House] was a big part of my life," he explains. Throughout those years, Erie House achieved such milestones as developing its TEAM mentorship program, expanding its services to Little Village, and helping open the doors to Erie Elementary Charter School.

"I was impressed with the strong leadership at Erie House," he says, recalling the four executive directors—Merri Ex, Rafael Ravelo, Ricardo Estrada and Celena Roldán-Moreno—who served during his Board tenure. Of course, their leadership couldn't have had the same level of impact without the support of a visionary Board of Directors committed to the mission of Erie House.

**RAMÓN CEPEDA**

A key factor to Erie Neighborhood House's sustained success is the clear vision established in those earliest years. "To know that you have an identity, you have a culture—you have a vision—is important," says Ramón Cepeda, Managing Director and Senior Vice President for The Northern Trust Company. "That translates whether you're a bank or a nonprofit."

Cepeda and Northern Trust are well equipped to talk about vision and sustained success. The Chicago-based financial institution recently marked its own milestone, celebrating 125 years of service. But for Northern Trust, success is also defined by the opportunity to give back to others. "When you have a healthy city, it's better for everybody," explains Cepeda. "It's better for [the individuals], better for the bank, better for the community at large."

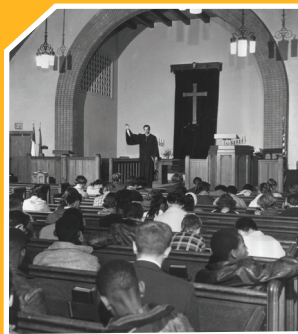
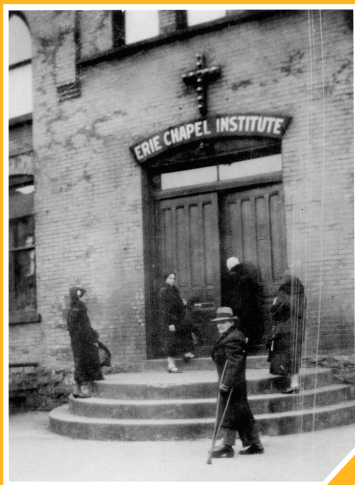
Northern Trust has long partnered with Erie House to create programming that contributes to stronger communities in the city of Chicago. The TEAM mentoring program—developed in 1984—is one such initiative. The program receives funding from Northern Trust's charitable foundation, and a number of their employees volunteer as mentors each year.

Their investment continues to pay off 30 years later: In 2014, 100% of TEAM participants graduated from high school—the fourteenth consecutive year the program has achieved this feat.

# 145 YEARS OF MAKING A DIFFERENCE... & WE'RE JUST GETTING STARTED

**ALMOST 300,000 PEOPLE HAVE BEEN EMPOWERED BY OUR PROGRAMS**

Thanks to the generous donations from people like you our communities are stronger, our families are healthier and our children have a brighter future.



**1870**

Holland Presbyterian Church—the precursor to Erie Neighborhood House—opens its doors in the West Town neighborhood.

**1900**



**1893**

Erie Kindergarten becomes one of twenty flagship programs in Chicago's Free Kindergarten Association initiative.





1894

The Chicago Federation of Settlements is founded, signifying the integral role settlement houses will play in social change as the city approaches the turn of the century.



1936

Erie Chapel Institute is renamed Erie Neighborhood House; the same year, a new building is dedicated at 1347 West Erie St., where it still operates today.

1914

Florence Towne arrives at Erie House to serve as a teacher and girls' group leader; her tenure will span five decades and earn her the moniker "Angel of the Alleys" from *Reader's Digest*. To learn more about the legacy of Florence Towne, visit [www.eriehouse.org/145years](http://www.eriehouse.org/145years).



1942

Erie House begins providing daycare in response to growing demand during WWII as men are deployed overseas and women—many of them young mothers—replace them in the workforce.



1950



**1967**

Bickerdike Redevelopment Corporation is founded by Erie House to create affordable housing opportunities for members of the community.

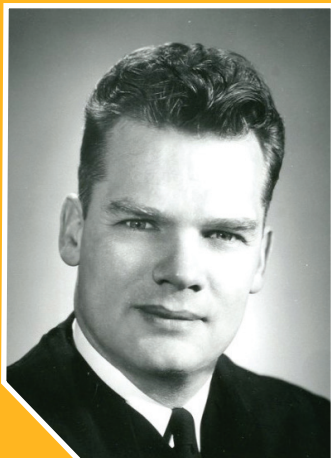


**1984**

The Northern Trust Company collaborates with Erie House to launch Tutoring to Educate for Aims and Motivation (TEAM), a groundbreaking mentoring program that supports the growth and development of neighborhood youth.

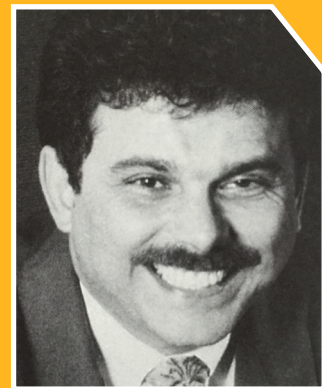
**1945**

Rev. Douglas Cedarleaf marches with Erie House participants to show solidarity with an African American family who had been victimized by harassment and vandalism upon moving into West Town.



**1985**

Five years after Mexicans become Chicago's largest immigrant population, Rafael "Rafa" Ravelo—a Cuban American—is named the first Latino executive director at Erie House.





"24th Place Cottages" by Flickr user Eric Allix Rogers, used Creative Commons Attribution 2.0 license.

## 2004

Erie House expands operations to begin serving families in Chicago's Little Village neighborhood, a community with a rich Mexican-American identity.

## 1996

Erie House opens its community technology center.



## 2005

Founded by Erie House, Erie Elementary Charter School opens in the Humboldt Park neighborhood, replicating the community-based approach to education found in Erie's childcare program in a K-8 setting.

# 2000

## 1994

Erie House moves into its second West Town location, sharing a renovated factory building with Erie Family Health Clinic. The clinic, which moved into the space at 1701 West Superior St. eight years earlier, began operating at Erie House's original location in 1956 as the Carmella Jacob Clinic.



## 2010

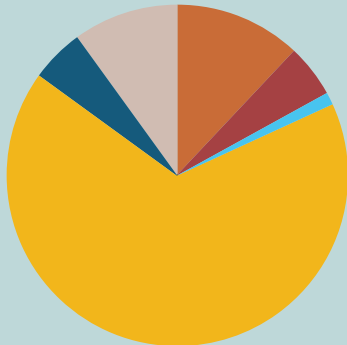
Erie House director of childcare and former childcare social worker Celena Roldán-Moreno is promoted to executive director.

# 2015 and BEYOND



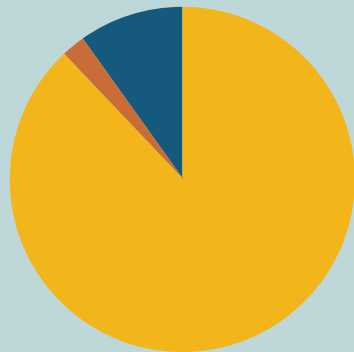
# FINANCIAL HIGHLIGHTS

## WHERE FUNDS COME FROM



- 67% Government
- 12% Private Contributions
- 10% Other Sources
- 5% Program Service Fees
- 5% Special Events
- 1% United Way

## HOW FUNDS ARE USED



- 88% Program
- 10% Fundraising
- 2% Management & General

Complete Fiscal Year 2014 audited financial statements are available at [www.eriehouse.org/donate](http://www.eriehouse.org/donate)

## STATEMENT OF ACTIVITIES AS OF JUNE 30, 2014 & JUNE 30, 2013

REVENUE	2014	2013
Private Sources		
Foundation, Corporations and Trusts	\$ 791,912	\$ 964,303
Individuals & Board	105,949	111,092
Congregations	23,465	50,667
Special Events	401,981	379,895
Donated Goods & Services	287,249	269,075
United Way of Metropolitan Chicago	100,000	210,000
Government Grants	5,189,567	4,654,742
Program Service Fees	425,845	519,237
Interest and Dividends	80,891	67,096
Unrealized and Realized Gains (Losses) on Investments	343,424	171,968
Miscellaneous Income	14,329	3,741
<b>Total Revenue</b>	<b>\$ 7,764,612</b>	<b>\$ 7,401,816</b>

## EXPENSES

Program Services		
Child Care	\$ 3,250,184	\$ 3,492,884
After School	801,196	800,844
Youth	498,432	438,649
Adult	1,135,861	1,802,131
Workforce	689,447	112,916
Health, Leadership & Advocacy	282,068	193,802
Total Program Cost	6,657,188	6,841,226
Supporting Services		
Management & General	167,156	408,616
Fundraising	783,962	572,538
<b>Total Expenses</b>	<b>\$ 7,608,306</b>	<b>\$ 7,882,380</b>

CHANGE IN NET ASSETS	\$ 156,306	(420,564)
Net assets – beginning of year	\$ 4,890,061	\$ 5,310,625
Net assets – end of year	\$ 5,046,367	\$ 4,890,061

## STATEMENT OF FINANCIAL POSITION AS OF JUNE 30, 2014 & JUNE 30, 2013

ASSETS	2014	2013
Cash/ Cash Equivalents	\$ 824,285	\$ 1,253,017
Investments	2,747,182	2,445,696
Accounts and Pledges Receivable	137,140	160,480
Due from Government Agencies	952,349	738,347
Due from Affiliated Organizations	-	6,548
Prepaid Expenses	19,116	24,959
Property and Equipment, Net	1,176,303	700,161
<b>Total Assets</b>	<b>\$ 5,856,375</b>	<b>\$ 5,329,208</b>

## LIABILITIES

Accounts Payable	\$ 205,487	\$ 129,411
Accrued Expenses	193,476	176,468
Line of Credit	234,791	-
Fiscal Agent Liabilities	128,090	88,000
Deferred Revenue	48,164	45,268
<b>Total Liabilities</b>	<b>\$ 810,008</b>	<b>\$ 439,147</b>

## NET ASSETS

Unrestricted	\$ 4,143,914	\$ 3,699,772
Temporarily Restricted	402,453	690,289
Permanently Restricted	500,000	500,000
Total Net Assets	5,046,367	4,890,061
<b>Total Liabilities and Net Assets</b>	<b>\$ 5,856,375</b>	<b>\$ 5,329,208</b>

# THE CONTRIBUTORS

## who keep us going

We extend our appreciation to the friends and organizations that support Erie Neighborhood House through generous gifts. They have played a significant role in transforming Erie Neighborhood House from modest beginnings 145 years ago to a first-class organization.

### \$100,000 & ABOVE

The Chicago Community Trust  
Chicago Tribune Charities,  
a McCormick Foundation  
fund  
Johnson & Johnson  
Lloyd A. Fry Foundation  
United Way of Metropolitan  
Chicago

### \$50,000 TO \$99,999

The Boeing Company  
National Council of La Raza

### \$25,000 TO \$49,999

John R. & Patricia A. Hall  
The Northern Trust  
Corporation  
Polk Bros Foundation  
Robert R. McCormick  
Foundation

### \$10,000 TO \$24,999

Allstate Insurance Company  
American Cancer Society  
Anonymous  
Bank of America Foundation  
Charles D. O'Kieffe  
The Comcast Foundation  
Exelon Corporation  
The Field Foundation of Illinois  
First Presbyterian Church of  
Lake Forest  
Geary Rimmer Vincent Wolf  
Foundation  
Grosvenor Capital  
Management  
John R. Houlby Foundation  
Kenneth V. & Leola H. Perkins  
Lyfe Kitchen, Inc  
MillerCoors  
Monterrey Security  
Consultants, Inc.  
Popular Community  
Bank Foundation  
Richard & Marjorie Schuham  
UBS  
Verizon Foundation  
Walgreens Company  
Woodward  
Wrigley Jr. Company  
Foundation

### \$5,000 TO \$9,999

Anonymous  
Comcast Cable  
CVS Pharmacy, Inc.  
Daniel J. & Barbara D. Hartnett  
Deloitte LLP  
The Donley Foundation  
G.H. Zendt Charitable Trust  
George & Charlene Locasto  
Henry Crown and Company  
Hernandez & Garcia  
Illinois Tool Works, Inc  
Irwin Andrew Porter  
Foundation  
John W. & Jeanne M. Rowe  
Nancy Vincent  
Payson E. and Eve Gordon  
Crissey Fund  
The Seabury Foundation  
Solano DeCarrier Management  
Steven D. Fox  
The Sun-Times Foundation  
United Way of America  
Victor S. & Mary R. Nelson  
Wm. Wrigley Jr. Company

### \$2,500 TO \$4,999

ABC-7 Chicago  
American Medical Association  
Anonymous  
Ariel Capital  
Management, LLC  
AT&T  
Bank of America  
Beverly Bank  
DeVry, Inc.  
Drinker Biddle & Reath LLP  
The Emergency Fund  
First Presbyterian Church  
of Wilmette  
Hipolito & Ida Roldán  
Hispanic Housing  
Development Corp.  
Illinois Tool Works Foundation  
Jacob Best Foundation  
James & Suzanne Neaylon, III  
James Fitzpatrick & Ingrid  
Dorer Fitzpatrick  
Jeff & Stacy Janiak  
John C. Benitez, PhD

John D. & Suzanne L. Van Pelt  
Law Offices of Terrence  
P. Le Feavour  
Lester & Edward Anixter  
Family Foundation  
Loyola University Chicago  
Mark A. & Laurie E. Jolicoeur  
MB Financial Bank  
McDonald's Corporation –  
Chicago Region  
Perkins + Will  
Presbytery of Chicago  
Raymond James Financial, Inc.  
Sergio & Banks Real Estate  
Steve & Gail Taggart  
Steven & Librada Killian  
Suzanne M. Burns  
The Trotter Family Foundation  
Union Church of Hinsdale  
VistaNational Insurance Group  
Wells Fargo

### \$1,000 TO \$2,499

Alderman Proco "Joe"  
Moreno  
Anonymous (2)  
Blue Foundation  
Chris & Lesley Fisher  
Dennis W. & Diane  
Seneca Langley  
Dr. Lee Francis &  
Michelle Gittler  
Edward & Carol Wroble  
Elizabeth Floersheimer  
Elizabeth M. Schubert  
Enlace Chicago  
Fernando Hernandez, M.D. &  
Marion Gielow  
Fidelity Charitable Gift Fund  
Frank & Janice P. Cicero  
Frye Foundation  
Gary & Macy Rozier  
Grainger Matching Charitable  
Gifts Program  
Hadley & Carol Pihl  
Harry L. Dolan Family Trust  
Hillshire Brands Matching  
Gifts Program  
James & Sharon Akers  
Jane A. Western

Jenni Fitzgerald  
Jesse H. & Michele I. Ruiz  
Joel A. & Sandy Pundmann  
John & Mary Helen Ray  
Johnson & Bell, LTD  
Kristie P. Paskvan  
Latin School of Chicago  
Lettuce Entertain You  
Enterprises, Inc.  
Lott Management, Inc.  
Mary Forester  
Maureen Hellwig, PhD  
Mesirow Financial  
Microsoft Matching  
Gifts Program  
Nate Prescott  
Oswaldo Alvarez  
Patricia J. Hurley and  
Associates, Inc.  
Patricia Perez  
Patsy O'Kieffe  
Peter & Cheryl Magrini  
PNC Financial Services  
Group, Inc.  
Ramon Gutierrez  
Richard Garibay &  
Esther Nieves  
Robert D. Merrilees  
Rocco J. & Roxanne M.  
Martino  
Rodrigo & Elizabeth Sierra  
Sam & Dona Scott Fund  
Steve Maze  
Sven & Julia Sykes  
Toroso Investments

### \$500 TO \$999

A. Rafael Ravelo  
Alderman Daniel Solis  
Amberleaf Cabinetry  
Anthony & Nancy Fulcher  
Birkdesign, Inc.  
Brad Esposito  
Bradley Hergott  
Breda Rugai  
Bruce & Teresa Griffith  
Celena Roldán-Moreno  
Charles Huzenis &  
Deirdre Jameson  
Charles W. Armstrong

Chicago Clerkships, LLC  
Chicago Commons  
Chris & Sarah McNamara  
Zweidinger  
Christopher Fort  
Dan & Ana Schreiber  
Darren & Anne Snyder  
The Dolins Group, LTD  
Donald & Catherine Northfell  
Eleanor Nicholson  
Eugene L. &  
Anna Jean Woroch  
Felipe & Theresa Diaz  
First United Church of  
Oak Park  
Fisher Financial Partners, Inc.  
Frank E. Trainer  
George T. Esherick  
Highland Park Presbyterian  
Church  
Ian Sutherland  
Illinois Action for Children  
J. Timothy Ritchie  
Jane Wells & Burt Ferrini  
Joanna Vergoth  
Gary & Joanne Gaspar  
John DeCarrier &  
Carmen Solano DeCarrier  
Kimbra Walter  
City Treasurer Kurt &  
Helen Summers  
Levy Alonso and Rodriguez  
Consulting Group, LLC  
LFV Acquisitions, LLC  
MacFund  
Manor Tool &  
Manufacturing Company  
Mark Furlane & Susan Keegan  
Mary McClure Miller  
Foundation  
Michael & Judith Poremba  
Michael Houlihan  
Milhouse Engineering &  
Construction  
Mitchell & Merri Ex  
Family Fund  
Nichols Insurance Agency Inc.  
Olga Camargo  
Omar & Clarisol A. Duque  
Paul Kasper  
Presbyterian Women in the  
Presbytery of Chicago  
R. Gerald & Joyce M. Fox  
Ralph I. & Rona Brown  
Ricardo Estrada &  
Beatriz Ponce de Leon  
Robert K. & Linda Garro  
Sandra & Rolando Arredondo  
Sassetti, LLC  
Soul Circus  
Theodore C. & Ann E. Doege  
Tropic Construction Corp

United Way of Greater  
Philadelphia & SNJ  
Water Saver  
William P. & Mary G. Boehler

### **\$250 TO \$499**

Adam & Lorena Alonso  
Alternative Schools Network  
Andrea Zopp  
Andres Roldán  
Andrew Madigan  
Ann & Robert H. Lurie  
Children's Hospital Chicago  
Bernard Bartilad  
Blue Daring Consulting, Inc.  
Carlos Ramirez  
Cristina Foods, Inc.  
David Tolen-Xolot &  
Katie Ferguson  
Diana Palomar  
Discover Financial Services  
You Care, We Share  
Dona-Lee Trotter  
Dr. Alexander Stemer  
Dr. Diego F. Giraldo  
Eric Mersmann  
Exelon Foundation  
Fun Times II, Inc.  
GE United Way Campaign  
Hirsch Schwartz Foundation  
J. Terrence Murray  
Jamila Baldwin  
Jeff & Madelyn Greenberger  
Jessenia Rodriguez  
John M. Jacus  
Joseluis Avalos  
Julian Lazalde  
Kenny Martin-Ocasio  
Kevin Crowell & Janet Leong  
Kim Penny  
Laurie Holmes  
Lee A. & Kim Clair  
Linda Ponce de Leon  
Manuel Sanchez  
Maria Bechily  
Unrestricted Fund  
Mary Kay Shukis  
Max & Kirstin Chernawsky  
Michael J. & Ellis Krick  
Mike & Elizabeth Suerth  
Nadim Kazi  
Nancy Grayheck  
Network for Good  
Paul A. Thomas, Jr. &  
Eva Hernandez  
Planned Parenthood of Illinois  
Representative Cynthia Soto  
Robert A. & Linda Malstrom  
Robert O. & Quinn E. Delaney  
Rockwell Space Solutions  
Ronald & Jill Rohde  
Scott Niehaus  
Siobhan Cafferty

Thomas & Judith Sanger  
Thomas R. & Nancy A. Hanson  
William G. Cordes

### **\$100 TO \$249**

Abbott Fund Matching Gifts  
Abbott Laboratories Employee  
Giving Campaign  
Ailisa M. Herrera  
Alicia Gonzalez  
Amy Laria  
Ana B. Serafin Gil  
Anonymous (2)  
AT&T United Way Employee  
Giving Campaign  
Aurora Huerta  
Barry Graham & Adrienne  
Colvert  
Belia Ortega  
Brett W. Fry  
Brigid E. Rafferty  
Cancer Risk Program at  
John H. Stroger Jr. Hospital  
Carlos Herrera  
Carlos Tortolero  
Catherine & Stephen Tucker  
Charles & Deborah Gonsowski  
Charlie & Nancy Crabill  
Christopher Corelli  
Citizens for Cynthia Soto  
Craig Fox & Patti Shuma  
Dale Sylvan  
Dan & Sara Weisberg  
Danny Yugsi  
Dave & Jane Tillinghast  
David Berkley  
David E. & Deborah L. Jasso  
David Wilson  
Debbie Wedren  
Deborah J. Kapp  
Doris Salomon Chagin  
Dr. Omar Ghoneim &  
Ami Novoryta  
Dr. Patricia Katherine Novick  
Dwight Marroquin &  
Clarissa Ponce  
Eileen Kirkwood  
Elizabeth & Randy Jenson  
Elizabeth Toledo  
Ellen B. Baldwin  
Elliott Soto  
Eric & Anne Gaertner  
Eric Thomas &  
Jamie Hausch Thomas  
Frances Casey  
Francis & Rosemary Neuhaus  
Francisco & Maria Jimenez  
Frank & Carlyn Whitehand  
Gene J. Podulka  
Genevieve Lefevour  
Gerda Schell  
Glenda Pinto  
Greg Grayson

Gregory J. Kurth  
Gregory P. & Rose M. Guarrine  
Henry Dwyer & Helen Murray  
leisha Montgomery  
Irving V. Clarke  
Izabela Poludniak  
Jacqueline Summerville  
James & Dorri McWhorter  
Janice Yu  
Jennifer Albensoeder  
Jenny G. Kubitscheck  
Jeremy & Stephanie Kleinman  
Jerry Gabrielatos  
Jessica Andujar-Redman  
Jessica Mendez  
Jill & Craig Kouri  
Jill Levine  
Joan & Charles C. Hansen, III  
John & Carol Mordach  
John & Stephanie Beyer  
Joshua Fulcher  
JPMorgan Chase Foundation -  
Matching Gifts Program  
Judith Gillies  
Judith Walker Kendrick  
Judy Erwin  
Julie Pichardo  
Kaberi Banerjee  
Katherine Figather  
Kathryn Sawyer  
Kay Lee  
Kilian Management Services  
Kim Enders  
Kirk & Nancy Esherick  
Kristin Rosebrough  
Leah Raffanti  
Lorena Nunez  
Loudis Mojica  
Louis T. Falk &  
Elizabeth Budz Falk  
Lucero Cervantes  
Lyon Family Foundation  
Manny & Georgina Flores  
Manufacturing Renaissance  
Marco Azucena  
Maria Wynne  
Marisol Martinez  
Marjorie R. Bosley  
Marty Davis  
Marvin L. Smith  
Mary Jo Weis  
Mary Louise Graham  
Mary Navarro  
Mary Parsons  
Mary Remien  
Matt Doman  
Maureen A. Mosh  
McDonald's Corporation  
Meritxell Ferre  
Michael & Linda Bishop  
Michael & Darlene Buenzow  
Michael Dodds  
Michael P. Guarrine

Michael T. Ray, Jr.  
 Michela Toledo  
 Mike Sands  
 Brian Jacobson &  
 Martha Ramirez  
 Natalie Corpuz  
 Naved Siddique &  
 Rukhsana Mirza  
 Neenah Godfrey  
 Nelson Carlo  
 Nicolas Guzman &  
 Dr. Meghan O'Neill  
 Noemi Flores  
 O'Keefe Management Co.  
 Patricia Garza  
 Paul & Kerry Russell  
 Paula King  
 Pedro Tenorio  
 Prescott Group, LLC  
 Rachel Weisburg  
 Richard & Anita Thies  
 Richard Doub  
 Robert Dirth  
 Robert L. & Jean G. Meyers  
 Ronald J. Mallicoat  
 Roosevelt M. &  
 Nerixsa Robertson  
 Ryan Collins  
 Seng VanMany  
 Sharon & Bob Eichinger  
 Stanley & Rose Young  
 Stephen Cornejo Garcia  
 Steve MacLellan  
 Steven Gaytan  
 Stuart Schramm  
 Terry Schy  
 Thad & Diana Rasche

Thomas F. &  
 Crystal Pruess Bush  
 Thomas Senesac  
 Tomoko Kizawa  
 Tristan Slemmons  
 United Way of Central Indiana  
 Valerie S. Lewis  
 Walter & Joan Kasten  
 Wells Fargo Community  
 Support – United Way  
 Campaign  
 William A. & Deborah S.  
 Montgomery  
 Yolanda Delgado  
 Yumeri Garcia

**GIFTS IN HONOR**

**In Honor of Chuck Armstrong**  
 Paul & Catherine Schultz  
**In Honor of Angela Carroll**  
 Marjorie R. Bosley  
**In Honor of Max & Kirstin Chernawsky**  
 Gary & Joanne Gaspar  
 George T. Esherick  
 Kirk & Nancy Esherick  
**In Honor of Reginald Chilton**  
 Virginia M. Innocenti  
**In Honor of Robert Gielow**  
 Frye Foundation  
**In Honor of Daniel J. & Barbara B. Hartnett**  
 Barry Graham &  
 Adrienne Colvert  
 Charles D. O'Kieffe  
 Frank C. Baldwin &  
 Barbara Ellson

**In Honor of Maureen Hellwig**  
 Dr. Patricia Katherine Novick  
 Thomas Senesac  
**In Honor of Mark Jolicoeur**  
 Kevin Crowell & Janet Leong  
**In Honor of Joe Moreno & Celena Roldán-Moreno**  
 Daniel J. & Barbara D. Hartnett  
 Dennis W. & Diane Seneca  
 Langley  
 Elizabeth M. Schubert  
 Mitchell & Merri Ex  
 Family Fund  
**In Honor of Victor S. Nelson**  
 J. Terrence Murray  
**In Honor of TEAM**  
 Northern Trust  
 R. Ernest Mahaffey &  
 Sheila Penrose  
**In Honor of Charles "Jack" O'Kieffe**  
 John & Mary Helen Ray  
**In Honor of Hipolito & Ida Roldán**  
 Stanley & Rose Young  
**In Honor of Jesse H. Ruiz**  
 Maria Bechily Unrestricted  
 Fund  
**In Honor of Peter & Claire Schu**  
 John & Stephanie Beyer

**GIFTS IN MEMORY**

**In Memory of Phyllis Armstrong**  
 Richard Garibay &  
 Esther Nieves  
**In Memory of Donald A. Gillies**  
 Judith Gillies  
**In Memory of Carol Jacus**  
 Richard Garibay &  
 Esther Nieves  
**In Memory of Connie O'Kieffe**  
 Richard Garibay &  
 Esther Nieves  
**In Memory of Dr. Anna Sanford**  
 Therese M. Michels

We sincerely appreciate and acknowledge these generous donations. If we have inadvertently omitted a contributor, please advise Erie's development department at 312-432-2238.

**ABOUT MEDIA MADE GREAT**

Design services for the 2014 Erie House Annual Report were donated by Media Made Great, a West Town agency. MMG has a personal connection to Erie Neighborhood House. One of MMG's co-founders, Michael DiGioia, is the grandson of Italian immigrants, Rose and Amatore, who moved to Ohio Street in the early 1900s from the Bari region of Italy. Over the years, the DiGioia family has supported, volunteered and benefited from the many programs and services offered by Erie House. MMG is proud to give back to an organization that has touched so many people's lives.

[www.mediamadegreat.com](http://www.mediamadegreat.com)



Amatore outside his storefront grocery store on the 1200 block of Ohio street in the 1930s.



Rose with some friends during an Erie House outing to Indiana in 1961.

## BOARD OF DIRECTORS

**John DeCarrier**  
*Board President*  
Solano-DeCarrier Mgmt.

**Patricia Perez**  
*Board Vice President*  
Patricia Perez Coaching  
& Consulting

**John Van Pelt**  
*Board Secretary*  
Northern Trust – Retired

**James E. Fitzpatrick**  
*Board Treasurer*  
Fitzpatrick Consulting – Retired

**Joseluis Avalos**  
*President, Erie Associate Board*  
Chicago Department of  
Public Health

**Jamila Baldwin**  
Comcast Cable

**Juan Beltran Garcia**  
Program Representative,  
Workforce Development

**Dr. John Benitez**  
Chicago School of  
Professional Psychology

**Dasia Corado**  
Program Representative,  
YOU

**Steven D. Fox**  
Norbridge

**Ashley Galston**  
K&L Gates

**Paul Gassel**  
Wrightwood Wealth  
Management

**Nicolas Guzman**  
Drinker Biddle & Reath

**John R. Hall**  
Goose Island Beer  
Company

**Daniel J. Hartnett**  
Commscope, Inc.

**Bradley Hergott**  
Discover Financial Services

**Mark Jolicoeur**  
Perkins + Will

**Librada Killian**  
JPMorgan Chase

**Beatriz Navarro**  
Program Representative,  
Adult Education

**Victor "Sy" Nelson**  
Northern Trust – Retired

**Jessica Perez**  
Program Representative, School Age

**Sandy Pundmann**  
Deloitte & Touche, LLP

**Sarah Rios**  
Program Representative, Childcare

**Gail Taggart**  
L3 Hospitality Group

**David Tolen-Xolot**  
Water Saver Faucet

**John Tuhey**  
Illinois Tool Works

## HONORARY LIFE TRUSTEES

**Elmera Brooks**  
**R. Gerald Fox**  
**Robert A. Gielow**  
**Elizabeth S. Graham**

**John D. Leslie**  
**Marie Leslie**  
**James J. McClure, Jr.**  
**Lynn McClure**  
**Bertha H. Pepe**  
**Donald E. Quinn**

**Lois Quinn**  
**Rev. Paul Rutgers**  
**Rose Ann Savino**  
**Marjorie G. Schuham**  
**Carol Wiley**  
**Robert Wiley**



**Erie Neighborhood House**  
1347 W. Erie St.  
Chicago, IL 60642  
Phone: (312) 666-3430  
Fax: (312) 666-3955

**Erie Community Center**  
1701 W. Superior St.  
Chicago, IL 60622  
Phone: (312) 563-5800  
Fax: (312) 563-5810

**Little Village**  
4225 W. 25th St.  
Chicago, IL 60623  
Phone: (773) 542-7617  
Fax: (312) 563-5810

**Erie Elementary  
Charter School**  
1405 N. Washtenaw St.  
Chicago, IL 60622  
Phone: (773) 486-7161  
Fax: (773) 486-7234